

DIAPHRAGM VACUUM PUMP

LABOPORT SD N 840.3 FT.40.18



Fistreem Headquarters

Beacon House,
Nuffield Road,
Cambridge,
CB4 1TF,
UK

Telephone: +44 (0)1223 727100
Fax: +44 (0)1223 727101

Email: sales@fistreem.co.uk
Website: www.fistreeminternational.com



 G A L L E N K A M P

 G A L L E N K A M P

Technical Features

- 100% oil-free transfer - thereby pure transferring, evacuation and compression of gasses.
- Integrated KNF self-drying system ensures that condensate is quickly removed from the pump heads without the vacuum being altered. The significantly reduces process time and process time and preserves the pump heads.
- Chemically resistant and thus ideal for use with extremely aggressive/corrosive gases and vapours.
- Maintenance-free.
- Environmentally friendly.
- Gastight, leakage rate approx. 6×10^{-3} mbar x l/s, not tested in serial production.

Technical Data

Flow rate [m³/h] at atm. pressure	2.04
Flow rate [l/min] at atm. pressure	34
Ultimate vacuum [mbar abs.]	10
Operating pressure [bar g]	1
Voltage [V]	230
Frequencies [Hz]	50
Motor protection	IP 44
Power P _i [W]	245
Operating current [A]	1.5
With thermal switch and power fuse	
Motors with other voltages and frequencies on request	

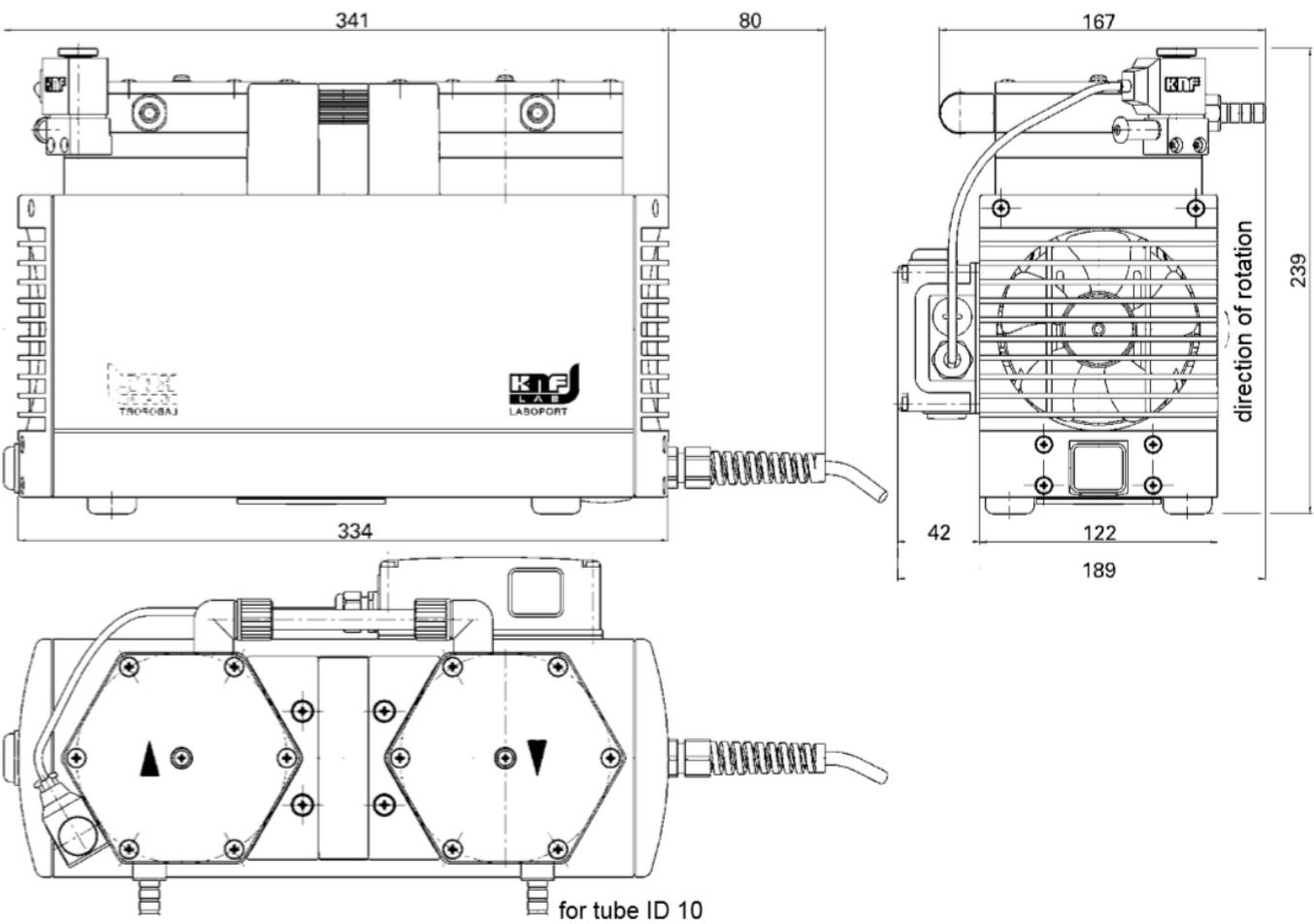
Materials

Weight [kg]	12.9
Hose connections	ID 10
Dimensions W x H x D [mm]	189 x 239 x 341
Permissible media and ambient temperature [°C]	+5 ... +40

Other Data

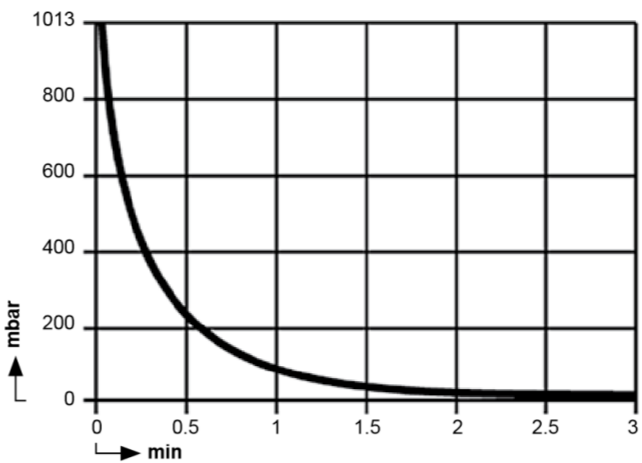
Pump head	PTFE
Diaphragm	PTFE-coated
Valves	FFPM

Dimensions

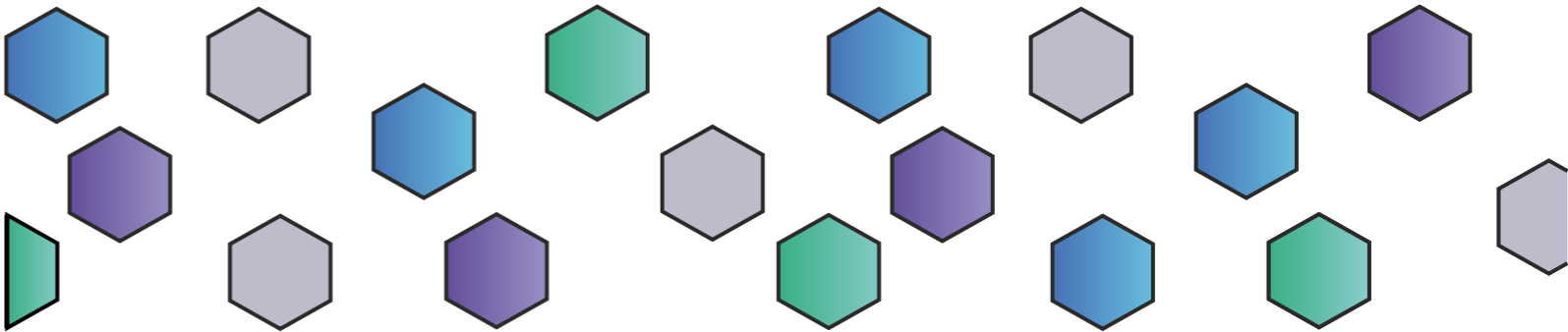
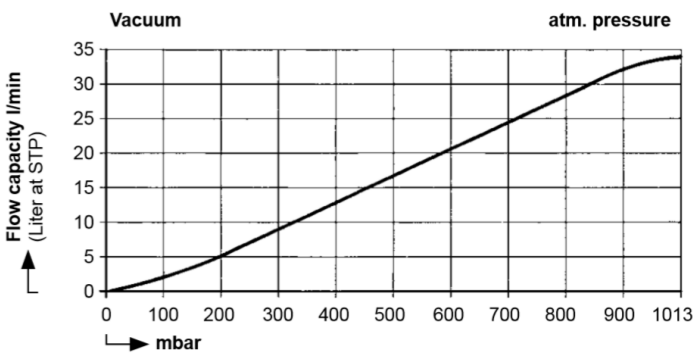


Performance Characteristics

Pump down time for 10 litre vessel



Flow capacity



Vacuum Control Unit VC 900



Technical Features

- Control of the vacuum application
- Separate control unit with pressure sensors and two-step controlled valve to be placed independently from the operating unit
- Easy to use

Technical Data - Operation Unit

Housing Materials	Plastic
Power Supply	Power cable - length 150 cm
Protection Class	Ip30
Mains voltage [V]	100-240
Frequency [Hz]	50/60
Operating current [A]	max. 1.0
Dimensions W x H x D [mm]	101 x 181 x 67
Accuracy of measurement	± 1 mbar
Measuring limit [mbar abs.]	upper: 1100 lower: 0
Interface	Mini USB

Technical Data - Control Unit

Dimensions W x H x D [mm]	155 x 109 x 60
Hose connections: - for gas in - for gas out - for venting	ID 10, PVDF ID 10, PVDF ID 4, nickel-plated brass

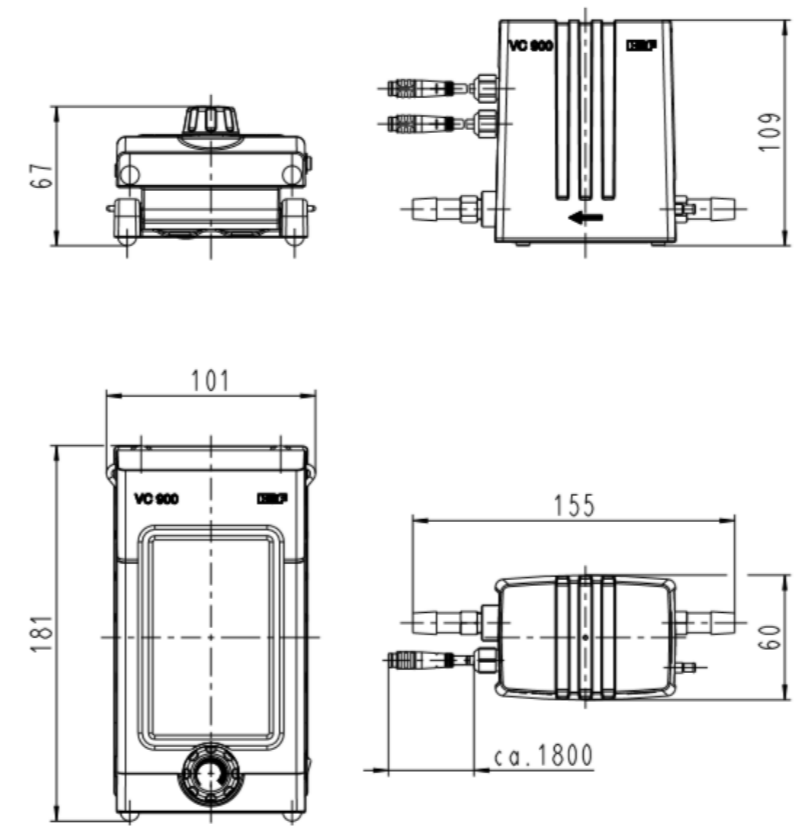
Technical Data - Other Data

Total weight [kg]	1.2 kg
Permissible media and ambient temperature [°C]	+10 to +4

Technical Data - Installation

Operating unit can be used as bench-top device providing 3 different display positions
Operating unit can be mounted at the wall

Dimensions



Accessories

Connection cable for N 920 G interface	2 meter or 5 meter
--	--------------------